

# Knowledge Base Article

---



## How to connect to VMware View Client from home.

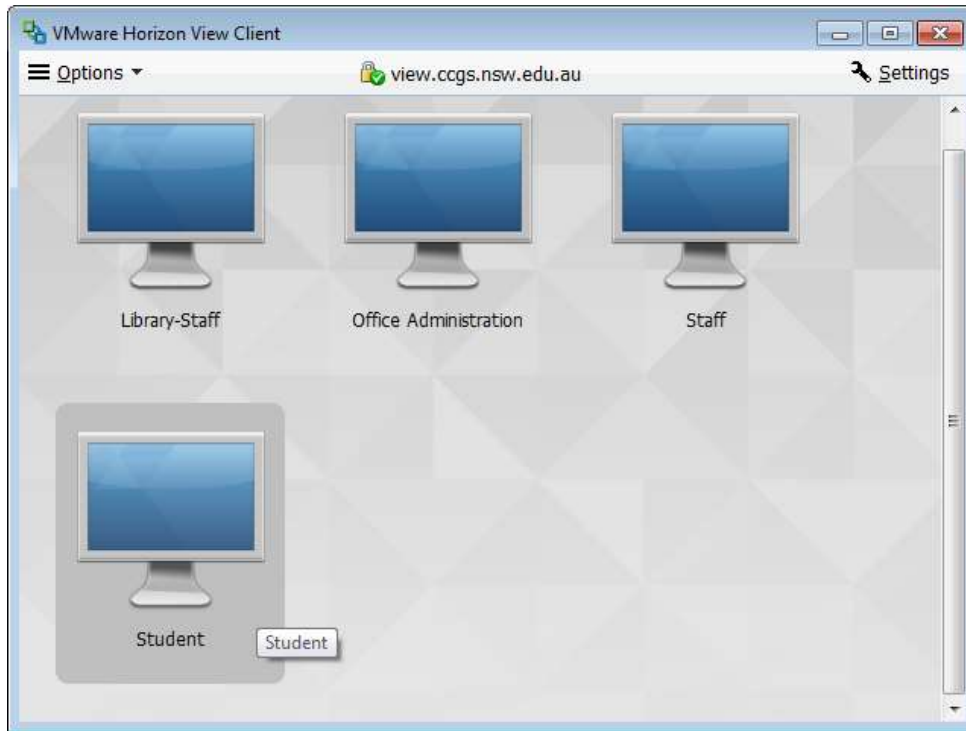
*You must be connected to the internet to access this feature*

1. You need to have the View client installed.  
Click [here](#) to download the client for your device and see <http://portal.ccggs.nsw.edu.au/Students/View.aspx> for more information.
2. Run your client and configure / enter view.ccggs.nsw.edu.au along with your student username and password. You should see:



3. Click on the cloud icon with 'view.ccggs.nsw.edu.au' underneath it.

4. Click on the computer icon with the type of user you are e.g. 'Student'



5. You will be taken to a new desktop which will look like the image below. If you would like to go back to your own desktop, click the minimize button on the top bar.



6. If you would like to get back to your View session, hover your mouse over the View icon on your taskbar, then choose the option "Student".